



MAY 28, 29, 30, 31, 1905

Official Souvenir
Programme

5 Cents
the Copy

COOK, TAYLOR COMPANY

231 and 233 CENTRAL STREET



YOU are cordially invited to inspect our large stock of LADIES' SUITS, SKIRTS AND WAISTS. We are the largest producers of Ladies' Outside Skirts in the city. Our stock of Ladies' Outside Skirts is twice the size of any in the city. Large factory, occupying two upper floors of our Central Street building, fitted with easy and accurate up-to-date time and trouble saving machinery—in fact, a corrector for the old way of making skirts.

Sicilian Skirts, Lymensville Cheviot Skirts, Panama Skirts, Voile Skirts, Chiffon Taffeta Skirts, Mohair Skirts, Silk Skirts, in all the latest umbrella effects and 72-tuck Skirts, at the lowest prices.

COOK, TAYLOR COMPANY

231 and 233 Central Street, Lowell, Mass.

J. S. TURNER MFG. CO.

Incorporated 1903
J. S. Turner, Treas. and Man.

TELEPHONE 1062-2

OAK-TANNED LEATHER BELTING

Leather Aprons. Worsted Rolls of all kinds Covered and Bossed. Comb Circles and Fallers Repaired. Comb and Machine Brushes. Turner's Patent WORSTED ROLL COVERING MACHINE. Repairing Worsted Machinery. Mill Supplies of all kinds. Special attention given to Repairing.

398 MIDDLESEX STREET - LOWELL, MASS.



SMITH & LAWRENCE

Hardware and
Builders' Supplies

Paints, Oils, Varnishes, Glass and Painters' Supplies

Agents for "S. W. P." The best known name in Paint

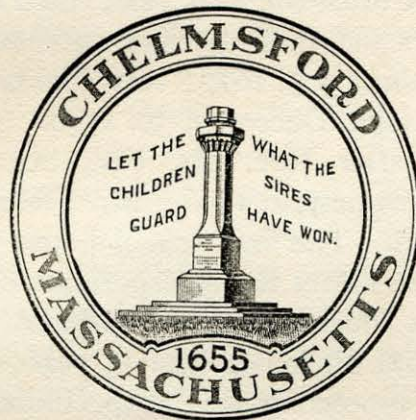
47-49 MARKET ST., LOWELL, MASS.

Two Hundred Fiftieth Anniversary

of

Town of Chelmsford, Massachusetts

1655



1905

May 28, 29, 30, 31, 1905

Published by McKittrick & Dearborn
Lowell - - - Massachusetts

Stipple Drawings by E. D. CHASE

Ad. soliciting by MISS A. A. SAVER

Brief History of Chelmsford



Chelmsford was incorporated as a town May 29, 1655, two hundred and fifty years ago. One hundred and twenty years later, July 4, 1775, the United States became a nation. We are now living one hundred and thirty years after that event; accordingly Chelmsford has a history as a town nearly twice as old as the United States as a nation.

John Adams in his quaint old diary said that Chelmsford was named as a compliment to Rev. Mr. Hooker, who originally came from the town of the same name in Essex County in England.

The first minister of record was Rev. John Fisk. The town, or rather what was to be the town the next year, voted him a living November 22, 1654. His successors and their dates of succession were as follows:— Rev. Thomas Clark, February 5, 1677; Rev. Samson Stoddard, June 26, 1706; Rev. Ebenezer Bridge, December 30, 1740.

Forty-one years after Rev. Mr. Fisk began to preach, Samuel Fletcher began to teach, namely, in 1696. Mr. Fletcher was the first school teacher hired by the town. The first school house was not built, however, until 1718, sixty-three years after the incorporation of the town.

Chelmsford's sons fought, bled and suffered all through the Indian and French wars. In 1671 all males over 15 years of age were ordered to bring clubs to church for protection against the Indians, who were becoming menacing. This was the origin of the "Big Stick" in this country. The phrase "Speak softly, but carry a big stick," has lasted even unto this day. All honor to Chelmsford.

Her sons were present at and took part in the sack of Acadia, and seventeen of these exiles found homes in Chelmsford.

That the danger from Indians was not merely fancied is shown from the fact that in 1675 two sons of Samuel Varnum were killed by Indians while crossing the Merrimack. During the Revolution, Chelmsford did her full duty. Her sons were present at Lexington, Concord and Bunker Hill, and, by the way, at the last named battle one of them, Joseph Spaulding by name, fired the first shot. He didn't wait to see "the whites of their eyes," but started the battle on his own account. A stately monument on the Common, dedicated September 22, 1859, stands as a memorial to those who fought in the Revolution.

In 1794 the first library of the town was established, containing 350 books. In 1825 Ralph Waldo Emerson graced the town with his presence. The next year that part of Chelmsford which comprises Lowell was set apart by act of Legislature, and named in honor of Charles Francis Lowell of Boston.

Chelmsford sent nearly 400 sons to the front in the war for the Union, '61-'65, some twenty of which never returned, having given their lives in defence of their country. Since the war the town has steadily grown in population and prosperity. Of late years many people of culture, wealth and refinement have selected Chelmsford as the seat of their residential establishments. Electric cars have made it easy of access, and many of Lowell's business men, merchants and clerks have made their homes here, going back and forth to their work in the cars.

Chelmsford is well supplied with churches. Since her earliest days she has been very religious. Her people provided for the common support of a church even before they applied for incorporation as a town. In the center there are four churches:—Unitarian Church, built in 1842, the original church on this same site was erected in 1655; the oldest society in town. Baptist Church, erected in 1869. All Saints Episcopal Church, built in 1879-1880. Central Congregational Church, built in 1888. In North Chelmsford there is a Catholic and a Congregational Church, and in West Chelmsford one of the Methodist persuasion.

Every town has more or less interesting history, but few if any have one so interesting as Chelmsford. Hundreds of fascinating episodes might be related if time and space permitted. In this tabloid sketch but one or two can be touched upon and these only in bald outline. It is a rather surprising fact to most people that the Lucifer match was invented in Chelmsford. Ezekiel Byam of South Chelmsford was the man whose clever ingenuity has benefited all posterity. The lime used in the construction of the first Lowell mill came from Chelmsford and was of exceptional quality.

The late Governor Greenhalge was a teacher in Chelmsford in 1862. His desk may be seen in the historical exhibit in the vestry of the Unitarian Church.

Chelmsford is the seat of many flourishing industries. Several corporations manufacturing textile fabrics, a large foundry and bottling works are among these. In addition to which there are several large green-houses, a tailoring establishment of notable size, a vinegar factory of wide note, grist mills and many others, giving evidence of Chelmsford's varied activities.

1664 *Perham Farm* 1905

NINE GENERATIONS

OUR PURE CIDER VINEGAR

Is the production of natural process and has been a specialty here for more than 60 years. It has strength, age, flavor and purity. That's why folks like it. :: :: ::

FOR YOUR EYES AND GLASSES.

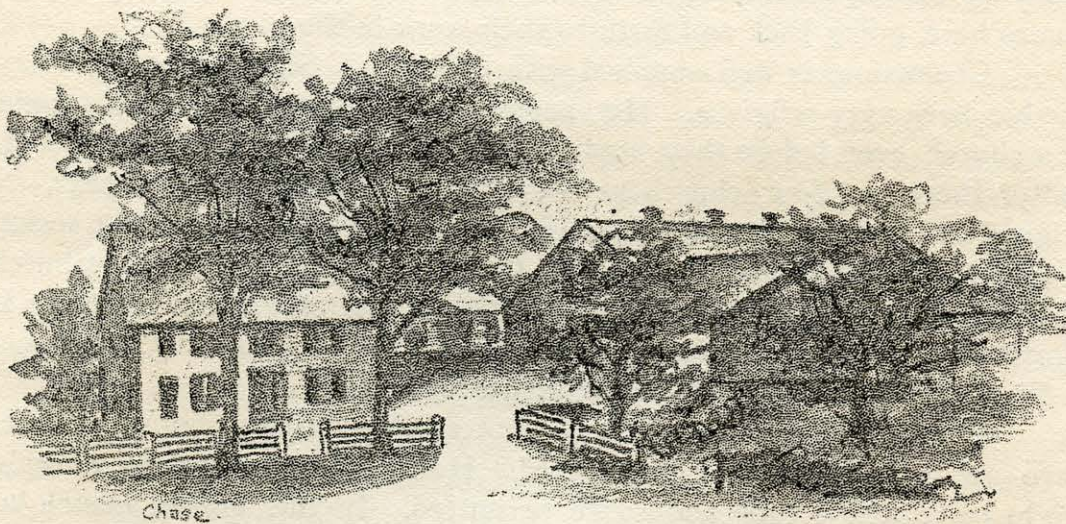


consult us any day or evening. Glasses, \$1 and upwards. Highest references from leading physicians and citizens. If you appreciate skilled service, then consult the

CASWELL OPTICAL CO.

27 Bridge St., ground floor, Lowell

Tel. 615-3



PERHAM FARM. Been in the family continuously for over 200 years.

ELEVATOR

TELEPHONE

ALL THE LATEST STYLES IN ARTISTIC PORTRAITURE

Hesscott & Clark
PHOTOGRAPHERS
53 Central St. -- Lowell, Mass.

PICTURES OF BABIES A SPECIALTY

F. L. CHALIFOUX

*Clothing, Hats, Shoes,
Ladies' Waists, etc.*

47-59 Central Street - Lowell

Branch House : Birmingham, Ala.

BEFORE BUYING A SEWING MACHINE
TRY THE

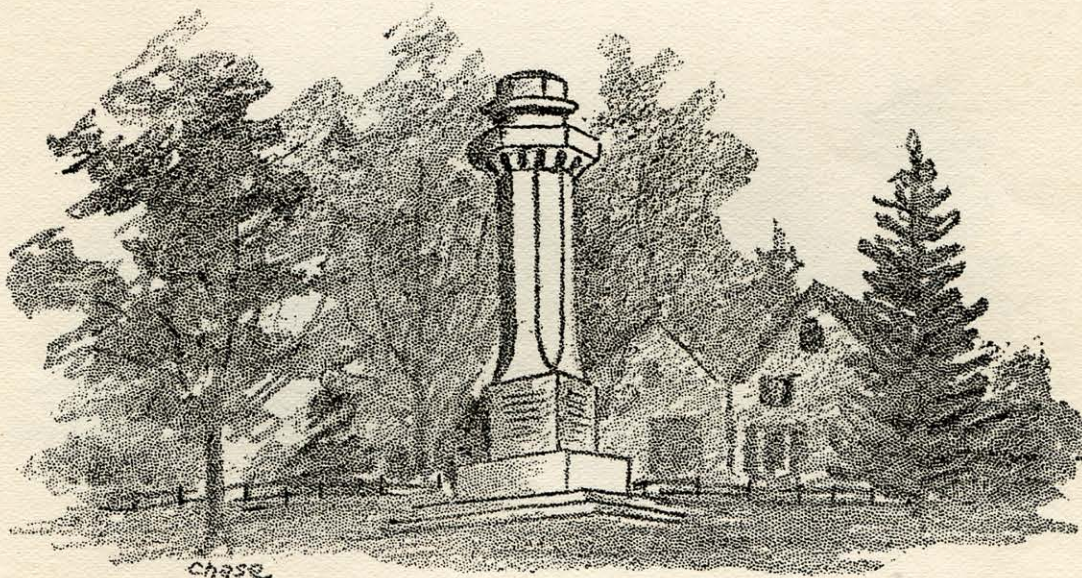
New Wheeler and Wilson

NEEDLE AND PARTS FOR ALL MAKES OF MACHINES

TELEPHONE 656-2

30 JOHN STREET

LOWELL, MASS.



THE REVOLUTIONARY MONUMENT. Erected and Dedicated in 1859.

While entertaining your guests during the
celebration of the 250th Anniversary of
Chelmsford you will want nice

ROASTS, STEAKS, CHOPS, FRUIT, Etc.

YOU CAN GET THEM AT

SWEETSER'S MARKET

Opposite Central Square, Chelmsford

Hood Farm and Turner Center Cream a specialty.
Try a jar of "Beech Nut" Bacon, Dried Beef or Peanut
Butter, they are fine.

WHEN YOU WANT TO SELL OR BUY

REAL ESTATE

OR HAVE YOUR FIRE INSURANCE
PLACED, CONSULT

GORDON, 219 CENTRAL STREET
OFFICE ALWAYS OPEN

ESTABLISHED 1831

TELEPHONE 942-5

Telephone

Harry Raynes

*LOWELL'S
LEADING
JEWELER*

64 Central St.

Lowell, Mass.

W. G. GARDNER

ERNEST GARDNER

Antique Furniture

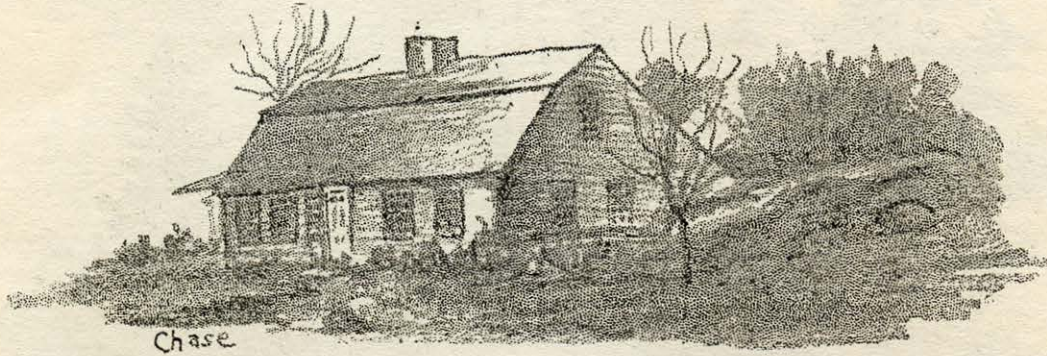
BOUGHT, SOLD AND REPAIRED

We do a general furniture repair business but make a specialty of repairing and refinishing antique furniture. We employ none but the best of help and guarantee satisfaction.

GARDNER BROTHERS

75 Pine Street

Lowell, Mass.



OLD FLETCHER HOUSE. Supposed to be the Oldest House in Chelmsford.

THE TALBOT CLOTHING CO.

THE DAYLIGHT STORE

American House Block, Central St.

Lowell, Massachusetts

G. T. PARKHURST

PRINTER

CHELMSFORD,

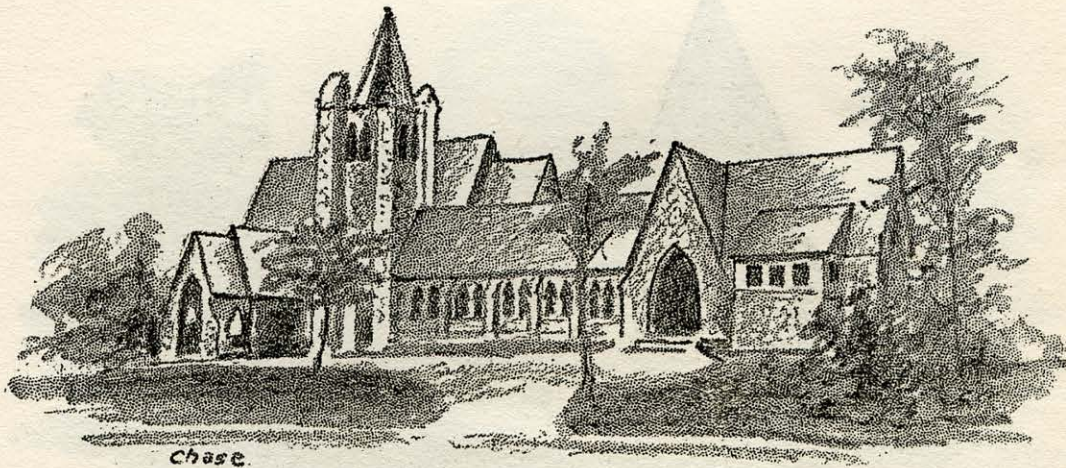
MASS.

What can you buy at the Post Office besides stamps?

**CIGARS, TOBACCO, CONFECTIONERY
ICE CREAM, SODA, COLLEGE ICES**

Stationery and Souvenir Postals
of Chelmsford

RALPH WALDO EMERSON



Chase

ALL SAINTS EPISCOPAL CHURCH. Built in 1879-1880.

W. H. DAVIS

Practical Repairer of

BOOTS, SHOES AND RUBBERS

Shoe Dressing, Laces,
O'Sullivan Heels

CHELMSFORD,

MASS.

LE-ROY PARKHURST

Ladies' Tailor

Ladies' costumes made strictly by young men tailors. English and Scotch goods directly across.

CHELMSFORD ROAD, CHELMSFORD, MASS.

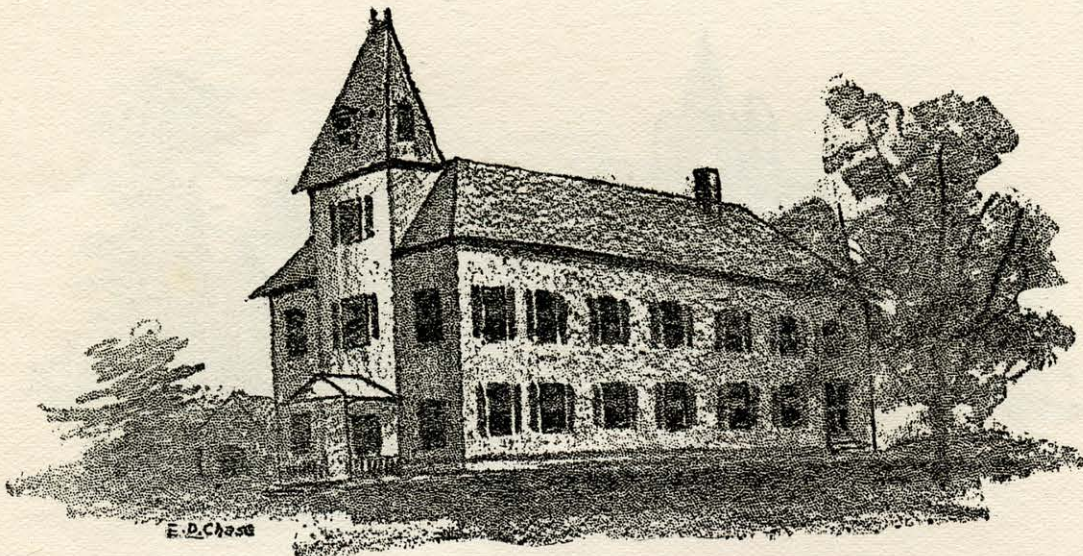
TIE A PIECE OF STRING

Around your finger so as to remind you, the next time you're in Lowell, that the best place in the State to get good, dependable and right-up-to-snuff clothes for men and boys, at the right prices, is at the

LOWELL ONE PRICE CLOTHING CO.,

**72-86 Merrimack Street,
LOWELL, MASS.**

CAR FARE ALLOWED TO SUBURBAN CUSTOMERS ON \$10 PURCHASES OR OVER



CHELMSFORD TOWN HALL. Built by the town about 25 years ago.

Fire Insurance

On Village and
Farm Property

FRED. C. CHURCH

52 CENTRAL STREET, LOWELL.

Lunch Served

At all hours during the
celebration. Table or
counter service. . . .

E. M. KINNAN

ODD FELLOWS BLDG., CHELMSFORD, MASS.

**EVANS' ICE CREAM
IN INDIVIDUAL BRICKS**

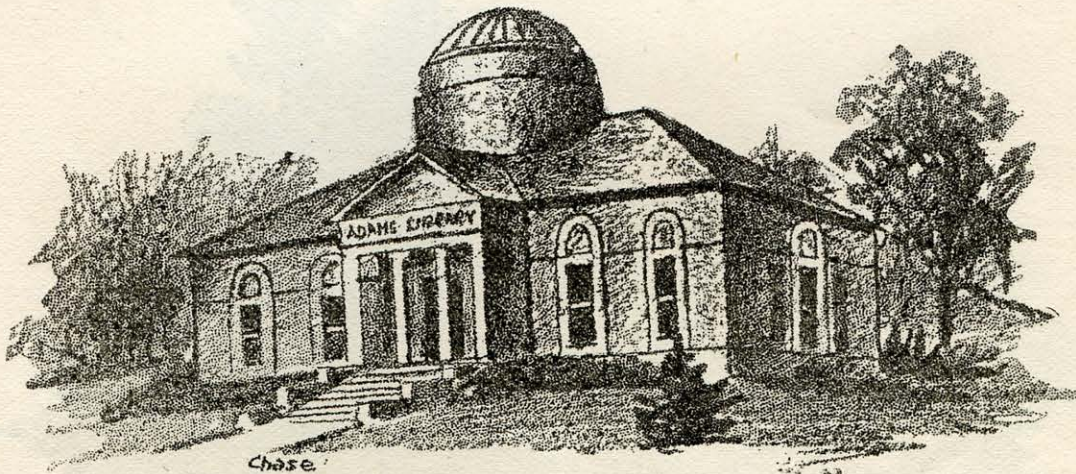
Is the neatest way to serve cream on any occasion. Made of the best materials and is equal to any in quality. Catering for large or small parties. :: :: :: :

11 BRIDGE STREET, LOWELL

C. F. HATCH CO.

*Makers of Fine Paper Boxes,
Paper Chandeliers and
Folding Boxes*

76 CHURCH ST. LOWELL



CHELMSFORD LIBRARY. Given by Amos F. Adams, of Boston.

DAY AND EVENING SCHOOL

Book-keeping by actual business method. Gregg system of stenography. English studies. Pupils received at any session.

ALBERT C. BLAISDELL
LOWELL BUSINESS COLLEGE

Runels Building, Merrimack Square, Lowell

Buy your household Chemicals here and you are certain of getting only the Purest and Best. ❁ ❁



TALBOT CHEMICAL CO.

40 Middle Street, ❁ ❁ Lowell

HISTORY REPEATS ITSELF

This is a busy world! WISDOM oft speaks in vain, and, as a last resort, HISTORY is called forth to lend her voice and influence.

At first she attracts notice from but few, and then, impressed with the seriousness and importance of her message, she speaks again and yet again, louder and still louder, adding to her words illustrations from real life. Wise is he who stops, listens and heeds.

MORAL :

OPEN AN ACCOUNT WITHOUT DELAY in the SAVINGS DEPARTMENT of the TRADERS' NATIONAL BANK, LOWELL, and MONTHLY (interest begins monthly) add to it, against what HISTORY terms "THE RAINY DAY."



BAPTIST CHURCH. Erected in 1869.

MRS. E. ELLIOTT

Variety Store

Cigars, Tobacco, Soda, Ice Cream,
Confectionery and Sunday Papers

MAIN ST., NO. CHELMSFORD

WALTER PERHAM

FUNERAL
DIRECTOR

Westford Road, Chelmsford

Telephone Connection

LOUIS ALEXANDER
Formerly of Fifth Avenue, New York.
IMPORTER AND TAILOR
 65 CENTRAL STREET,
 LOWELL, MASS.

G. C. Prince & Son

**COMMERCIAL
 STATIONERS**

PICTURE FRAMES MADE TO ORDER

108 MERRIMACK STREET



Chase.

CENTRAL CONGREGATIONAL CHURCH Built in 1888.

Queen & Small

GROCERIES, FLOUR, GRAIN, GENERAL
 MERCHANDISE, HARDWARE,
 FRUITS and NUTS

NORTH CHELMSFORD

ALVIN LAWRENCE.

MAKER AND JEWELER

ESTABLISHED 1851

No. 26 GORHAM ST.
 LOWELL MASS.

*Fine and Complicated Watches
 including
 Pocket and Marine
 Chronometers,
 Chronographs, Calendars,
 Repeaters, 1/4 & 1/2 Seconds &c.
 Repaired & Adjusted
 Heat, Cold, Isochronism & Position.*

BARTLETT & DOW

...SEEDS...

216 Central Street

Lowell, Mass.

GEORGE W. CHASE

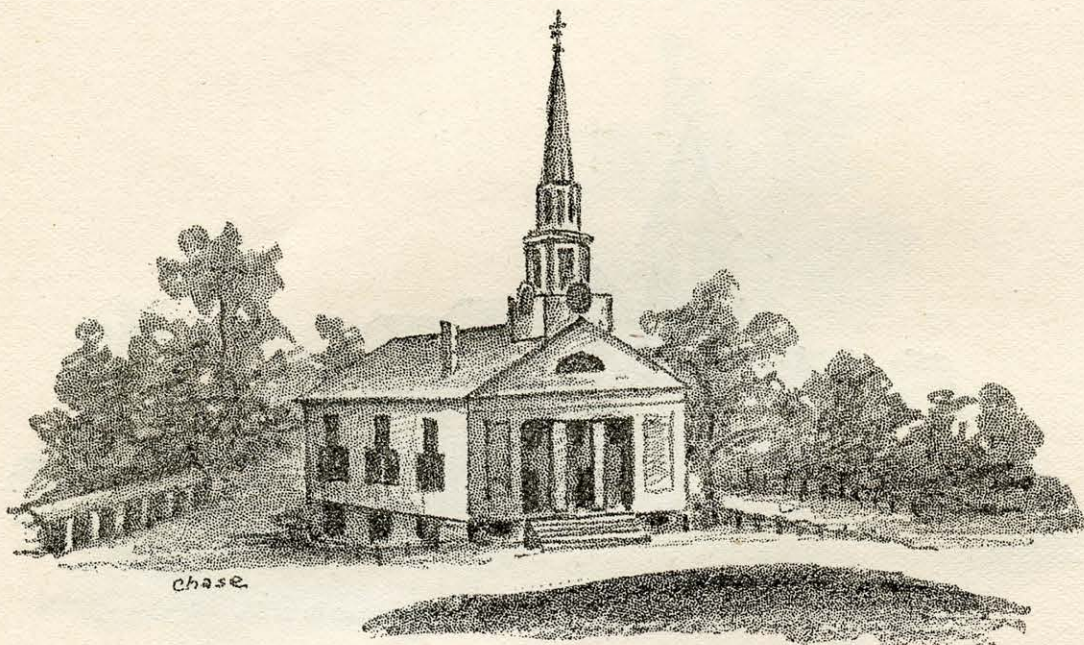
Says he carries the finest line of FOREIGN
AND DOMESTIC WALL PAPER NOVEL-
TIES in New England

IT'S TRUE INVESTIGATE

Lowell Wall Paper Co.

97 APPLETON ST.

LOWELL, MASS.



UNITARIAN CHURCH. Built in 1842, the original church on this same site was erected in 1655.
The oldest society in town.

**American and Foreign
Wall Papers at**

J. ALFRED PINALD

337 Westford Street

Lowell, Mass.

S. W. Parkhurst



**GROCERIES and
General Merchandise**

CHELMSFORD, MASS.

IF you buy your Soda, Confectionery and Cigars at our store during the anniversary week, **YOU** will get the best goods money will **BUY**.

FALLS & BURKINSHAW

RELIABLE DRUGGISTS

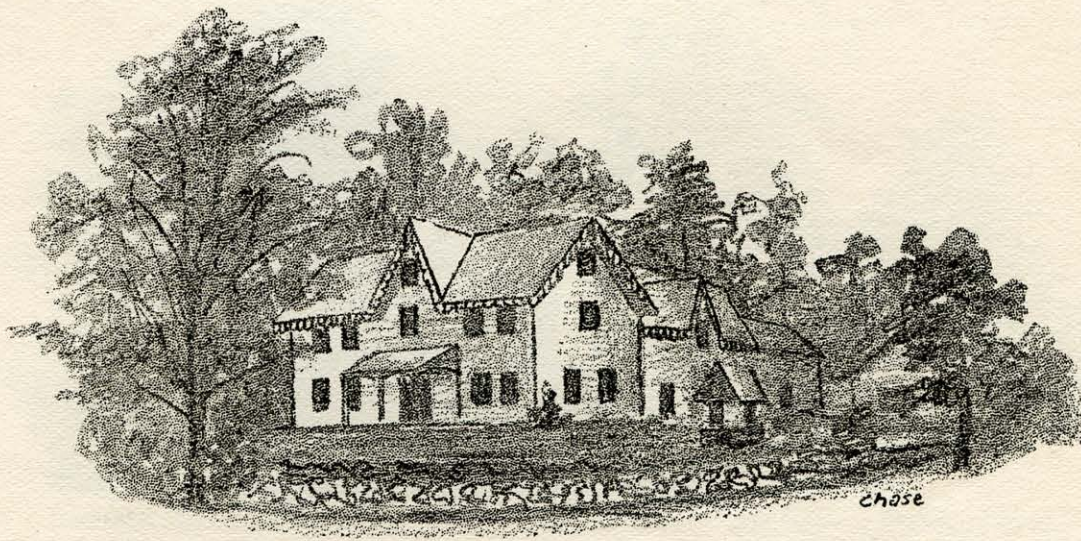
Lowell and Chelmsford.

Harry L. Parkhurst

WOOD COAL COKE

CHELMSFORD, MASS.

Telephone



COL. SIMEON SPAULDING HOUSE. Built by one of the first settlers in town.

A. D. PUFFER & SON.

Choice
Family Groceries

109 BRANCH STREET
LOWELL, MASS.

HORACE ELA

... Undertaker ...

Parlors, 12 Hurd St.
Residence, 12 Burt St.

LOWELL, MASS.
TELEPHONE

JOHN S. HALL

WILLIAM A. INGHAM CO.

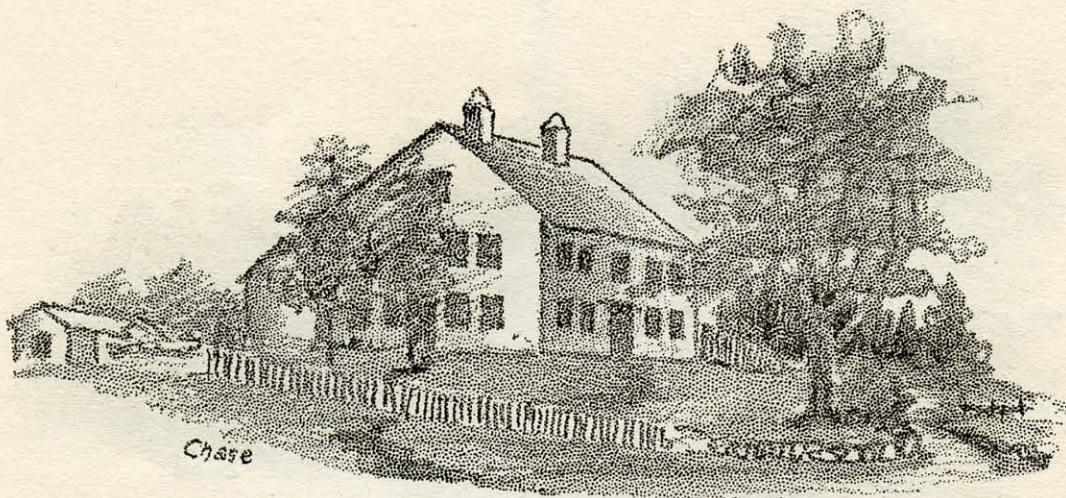
POSTMASTER

WHOLESALE GROCERS

Jobbers in Country Produce

No. Chelmsford, Mass. VARIETY STORE

44 Church Street, - Lowell, Mass.



THE TOWN FARM. Originally the Old Manning Tavern, on the Toll Road to Boston.
The Toll House stood exactly opposite.

Flowers Mirror the Soul of the Giver

OURS ARE THE MOST REASON-
ABLE OF ANY OF OUR
COMPETITORS.

**MELLOR & SAUNDERS
FLORISTS**

(MR. MELLOR FORMERLY WITH PATTEN)

30 PRESCOTT STREET, - - - LOWELL
TELEPHONE 1387-2

**CHELMSFORD
GINGER ALE**

Costs more to make
than any other brand

Try a bottle and you'll taste why

COSTS YOU 5 CENTS AT ALL GOOD PLACES

COMPLIMENTS OF
NOYES & DEWAR CO.

*Lowell's Credit
 ... Clothiers ...*

157 Middlesex Street

Lowell, Mass.

COMPLIMENTS OF
**THE BOSTON CLOAK AND
 SUIT STORE**

THE STORE THAT HAS THE
 STOCK AND SAVES YOU MONEY

Merrimack Street

Lowell, Mass.



EMERSON FARM. One of the oldest houses in town. Has been continuously in the family for 200 years. There is a bullet hole beside the front door, fired at an Indian who tried to set the house afire during the King Philip War.

ICE CREAM SODA
 COLLEGE ICES **5 Cents**

"The Drinkaway"

HOWARD, The Druggist 197 Central St.
 OPPOSITE HURD ST., LOWELL, MASS.

**THREE GOOD THINGS TO HAVE
 IN THE HOUSE**

PETRA HELA the great healer, cures
 Piles, Salt Rheum and
 all skin diseases

PETRA HELA SOAP for the Toilet,
 cures Pimples,
 Blotches, etc.

PETRA HELA LIVER PILLS
 cure Headache and Indigestion

SOLD BY ALL DRUGGISTS

Sweetser & Day

HAY, GRAIN and FEED

We do custom grinding in addition to our own work. The original mill was built on this site in 1826 and burned in 1861, and in 1862 the present mill was erected. Been grinding ever since : :

CHELMSFORD - - - MASS.

**THOMPSON HARDWARE
COMPANY**



THE BARTLETT HOUSE. Two Hundred Years Old.

COMPLIMENTS OF

“Rollaway and Bowlaway”

LOWELL - - - MASS.

H. B.

*If You Enjoy a Cup of Really Fine
Tea or Coffee*

we advise you to try Chase & Sanborn's brands, and to make a complete lunch just add some of Bradt's Celebrated Soda Biscuit. We know you will enjoy these. You will find them at

E. T. ADAMS, Groceries

Hardware, Crockery, Dry Goods
CHELMSFORD, MASS.

Crayon, Sepia, Water Color
and Pastel Portraits

Lothrop Cunningham
45 MERRIMACK ST.
LOWELL, MASS.

Copying and Enlarging
Platinum Portraits a Specialty

SUNDAY, MAY 28.

10.45 A. M.—Religious Services in the Several Churches.

First Congregational (Unitarian)	Rev. A. D. K. Shurtleff
First Baptist, South Chelmsford	Rev. C. W. Williams
Second Congregational, North Chelmsford	Rev. D. A. Hudson
Central Baptist	Rev. C. H. Ellis
Methodist Episcopal, West Chelmsford	Rev. C. M. Merrill
St. John's (Roman Catholic), North Chelmsford	Rev. Fr. E. T. Schofield
All Saints' (Episcopal)	Rev. Wilson Waters, Rector
Central Congregational	Rev. A. F. Earnshaw

3 P. M.—Union Service

1 VOLUNTARY—Gloria from 12th Mass	Pavilion
2 INVOCATION	<i>Mozart</i>
3 HYMN	Rev. C. H. Ellis
4 RESPONSIVE READING—24th Psalm	Rev. Fr. E. T. Schofield
5 CHORUS—Festival Anthem	Rev. C. W. Williams
6 SCRIPTURE READING	<i>Buck</i>
7 CHORUS—To Thee, O Country	Rev. Wilson Waters
8 PRAYER	<i>Eichberg</i>
9 RESPONSE	Rev. A. F. Earnshaw
10 INTRODUCTION OF SPEAKER	Ladies' Quartette
11 ADDRESS—The Glory of the New England Town,	Rev. D. A. Hudson
12 HYMN—America	Rev. Samuel A. Eliot, D. D., of Boston
	Rev. C. M. Merrill
13 BENEDICTION	Chorus and Congregation.
	Rev. A. D. K. Shurtleff

Singing will be by chorus of 50 voices conducted by Mr. Hubert Bearce.

*Souvenirs
of Lowell*



The Finest Line in Town

Sterling Silver Spoons, a Large Variety at all Prices

GRANT JEWELRY CO.

64 Merrimack St., Lowell, Mass.

FRED GRAY, Manager.

OUR SPECIAL, "CITY HALL SPOON," Price \$1.00

Richardson Hotel

Directly opposite
Middlesex Station

LOWELL, - - MASS.

European Plan

Rooms 50 Cents and Upward

Trusses and Supporters

The most desirable patterns.
Sold and fitted in private office.

F. & E. BAILEY & CO.

APOTHECARIES

Cor. Merrimack and John Sts., Lowell, Mass.

MONDAY, MAY 29.

Sunrise.—Ringing of Bells.

10 A. M.—Historical Exhibit Opened Vestry, Unitarian Church
This will remain free to the public until 9 p. m. Wednesday.

10.30 A. M.—Concert on Common North Chelmsford Band
Mr. Hubert Bearce, Conductor.

2 P. M.—Anniversary Exercises Town Hall
MUSIC North Chelmsford Band
J. ADAMS BARTLETT, President of the Day.

ADDRESS OF WELCOME Walter Perham, Chairman of Selectmen

RESPONSE Prof. Charles F. Emerson
Dean of Dartmouth College.

MUSIC—Clarinet Solo.

ADDRESS—The Town Our Fathers Builided Henry S. Perham

MUSIC Band

Sunset.—Ringing of Bells.

8 P. M.—Concert on Common Chelmsford Centre Band
Concert at North Chelmsford North Chelmsford Band

8.15 P. M.—Informal Reception to Home Comers Town Hall

Furniture Hospital

CLARENCE MAHONEY
Proprietor

UPHOLSTERING AND REPAIRING OF ALL
KINDS OF FURNITURE

77 and 79 Branch St., cor. Queen. Tel. 477-3

F. E. HARRIS

The Caterer

WILL FURNISH MEALS AND ICE CREAM
in the Town Hall during this celebration

WHAT is the need of standing over a coal range or working in a hot kitchen all summer? Why not enjoy this summer as you have never done before? A GAS RANGE installed NOW will do this very thing for you.

LOWELL GAS LIGHT CO.

BUY YOUR

PIANOS
AND SHEET MUSIC
AT
GRUNEWALD'S

50 Central Street - Lowell, Mass.

TUESDAY, MAY 30.

9 A. M.—Memorial Day Exercises.

Conducted by Veterans' Association, Francis Hutchinson, Commander.

ADDRESS, Hon. Samuel L. Powers, of Newton

MUSIC, Chelmsford Centre Band.

Mr. G. Thomas Parkhurst, Conductor.

CHILDREN'S DAY.

12 M.—Collation to School Children.

1 P. M.—Children's Entertainment.

Prof. F. O. Harrell, Magician, Entertainer.

Followed by Sports, Games, Etc.

MUSIC, Chelmsford Centre Band

8 P. M.—Concert.

Songs of "Ye Olden Time," by 40 singers in ancient costume. Conducted by Mr. Arthur W Allen, of Everett, assisted by the Chelmsford Orchestra.

PUTNAM & SON CO.

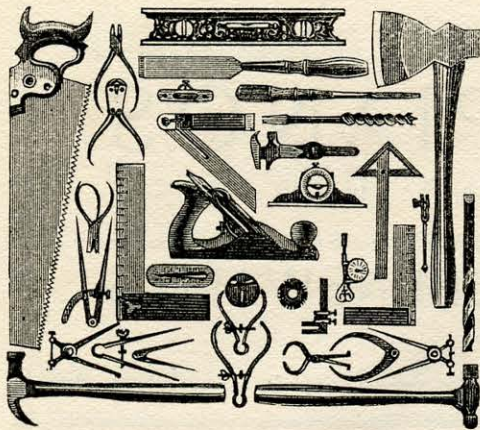
Men's and
Boys' Outfitters

166 CENTRAL STREET, LOWELL

THE WHITE STORE

"Chic"
Muslin Underwear

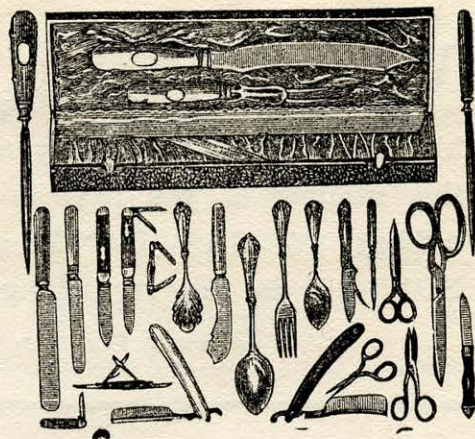
114—MERRIMACK STREET—116



W. T. S.
BARTLETT

Staple and Fancy
Hardware, Paints
and Mill Supplies,
Tools and Cutlery
— of —
every description

653-659 Merrimack St.
The Uptown Hardware Store



WEDNESDAY, MAY 31.

Sunrise—Ringing of Bells.

9 A. M.—Excursions will be arranged for visitors to places of interest about the town.

10 A. M.—Concert on Common. Salem Cadet Band

1 P. M.—Banquet. Anniversary Pavilion

REV. WILSON WATERS, Chairman and Toastmaster.

His Excellency William L. Douglas, Governor of the Commonwealth, is expected, with other distinguished guests, to take part in the post-prandial speaking.

MUSIC, Salem Cadet Band

2 P. M.—The Pavilion will be open to the public before the speaking.

8 P. M.—Concert and Reception. Town Hall

10 P. M.—Anniversary Ball.
Salem Cadet Orchestra, 8 pieces. Dancing till 2 A. M.

Tickets to Old Folks' Concert, Tuesday Evening, 25 cents. Tickets to Banquet, Wednesday, \$1.00. Tickets to Ball, admitting lady and gentleman, \$2.00.

A restaurant in lower town hall, conducted by F. E. Harris of Lowell, will provide meals at all hours, at moderate prices.

J. ADAMS BARTLETT,
HENRY S. PERHAM,
JOSEPH E. WARREN,
HARRY L. PARKHURST,
GEO. F. SNOW,

ARTHUR H. SHELDON,
HUBERT BEARCE,
ERASTUS A. BARTLETT,
DANIEL P. BYAM,

Committee of Arrangements.

**North Chelmsford
Machine and Supply Co.**
(Incorporated)

H. STANLEY CRYSLER, Pres. and Man.
GEO. C. MOORE, Treas.
HENRY WOODS, Sec'y.

Successors to Silver & Gay Co., Est. 1832, and
North Chelmsford Supply Co., Est. 1897.

**Worsted Mill Machinery and Supplies. Spinning
and Drawing Rolls a Specialty.**

J. F. McMANOMIN
Fine Groceries

**Confectionery, Cigars
and Tobacco**

NORTH CHELMSFORD, MASS.

A. G. Pollard & Co.

"THE STORE OF SOLID WORTH"

The Warm Days of Summer are Here, and Our Stock of Ready-to-Wear Goods Was Never So Varied and Complete.

White Lawn, Linen and Jap Silk Waists. A bewildering assortment from which to choose.

Lawns for	- - - -	98c. to \$7.50
Linens for	- - - -	\$2.50 to \$10.00
Jap Silks, both white and black,		\$1.98 to \$10.00

A dozen or more different styles in **White Lawn Two-Piece Suits.** Waists made with fine tucks and insertion, thirteen-gore plaited skirts, trimmed to match waist. All sizes, 32 to 42, and the prices are very tempting.

\$2.50, \$2.98, \$3.50, \$4.50 and \$5.00.

The same ideas are carried out in fine **Handkerchief Linens** and in the more substantial **Butcher Linens.** Some very elaborately embroidered, with eyelet and cut work. Prices

\$4.50, \$5.75, \$6.75, \$7.50 and \$10.00.

East Section

Second Floor

A. G. POLLARD & CO.

Merrimack, Palmer and Middle Streets, Lowell, Mass.

MOORE SPINNING CO.

NORTH CHELMSFORD, MASS.



Manufacturers of

High Class Worsted Yarns

E. W. ATKINSON, PRESIDENT
ANDREW ADIE, TREASURER
MARK INGHAM, SUPERINTENDENT
L. H. FITCH, SELLING AGENT

MILLS AT NORTH CHELMSFORD

Office, 157 Federal St., Boston, Mass.