

**FORM B - BUILDING**

MASSACHUSETTS HISTORICAL COMMISSION  
Office of the Secretary, State House, Boston

In Area no.	Form no.
	252



1. Town Chelmsford  
Address 17 Proctor Road  
Name Grange Hall  
Present use Girl Scout House

Present owner Town Of Chelmsford

3. Description:

Date 1908

Source School committee reports

Style \_\_\_\_\_

Architect E.R. Clark

Exterior wall fabric clapboard - butted

Outbuildings (describe) none

Other features hip roof; full length

pilastered cornerposts; front

portico with Doric entablature

slightly

Altered interior Date ca 1952

Moved no Date \_\_\_\_\_

5. Lot size:

1 acre

One acre or less  Over one acre

Approximate frontage 14 rods or ca 230 f

Approximate distance of building from street

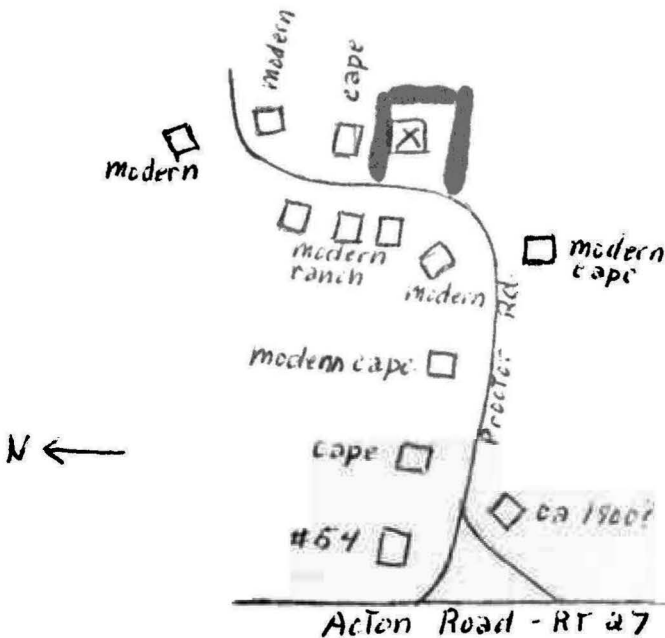
ca 125 feet

6. Recorded by Jane B. Drury

Organization Chelmsford Hist. Commissi

Date July 28, 1978

4. Map. Draw sketch of building location in relation to nearest cross streets and other buildings. Indicate north.



DO NOT WRITE IN THIS SPACE  
USGS Quadrant \_\_\_\_\_  
MHC Photo no. \_\_\_\_\_

(over)

Contractor: Charles E. Parkhurst



17 Proctor Road  
Grange Hall

1831 map: no  
1875 Beers Atlas: no

Chelmsford Assessors Office, July 20, 1977:

Plat 225, Block 46, Lot 264  
Exempt property

1972 Grange Hall	\$10,000	1 acre	\$5000
1967 Grange Hall	1,200	1 acre	200

9/29/1952 deed, Book 1206, Page 289  
title from Inhabitants of Town of Chelmsford  
1 acre.

Annual Report of School Committee - for year ending Dec. 31, 1936

pg. 11 - "The needs of South Chelmsford were met next, by an appropriation of \$6,500 in 19 . The building has two rooms, 24 feet by 28 feet."

Annual Report of Town Clerk - 1908

No date given, but between Jan. 1908 & May 16, 1908:

"Under Article 16, voted that the Town raise and appropriate the sum of \$600 to be expended on the grounds at the South School. The work to be done and the money spent under the direction of the Building Committee of the school at South Chelmsford."

Annual Report of Selectmen - March 1908 to March 1909

School House, South Village	
Charles E. Parkhurst, contractor	\$1,546.35
Welch Bros., plumbing	389.67
E.R. Clark, architect	45.00
Emerson & Co., supplies	24.00

Annual Report of School Committee - for year ending February 29, 1908

"At the South, the new building is nearing completion and the old house will soon be abandoned."

Annual Report of Selectmen - March 1907 to March 1908

Schoolhouse, South Village	
E.R. Clark, architect	\$ 255.00
Charles E. Parkhurst, contractor	3,530.00
R. Wilson Dix, digging well, grading, etc.	108.00
Welch Bros.	700.00
Fred A. Russell, 50 fence posts	10.00
Warren Berry, labor	9.25
Emerson & Co., wire fence	21.30

17 Proctor Road  
Grange Hall

Report of School Committee 1906-1907

"At South Chelmsford there is immediate need of a new two-room building and an article has been inserted in the warrant for our next annual town meeting in relation to a new building at that place."

Annual Town Meeting March 25, 1907

"Took up Article 18. It was voted that the Town raise and appropriate the sum of \$200 for the purpose of buying a lot of land in South Chelmsford for school purposes."

# Chelmsford-Westford-Tyngsboro Newsweekly

VOL. XXXVII NO. 29

CHELMSFORD, MASS., NOVEMBER 18, 1976

Price 15¢

## Grange Hall Given To Girl Scouts

By unanimous vote of the four Selectmen present at Monday night's meeting, the Girl Scout organization was granted use of the Grange Hall in South Chelmsford. (Selectman Palmer away on business).

Prior to making the decision, discussion was held concerning a list of 14 conditions for the hall's use submitted by Selectman William Murphy. In his recommendations, Murphy suggests giving the Hall to the Lions Club, one of the other groups which had requested the building. His reasoning was that the Lion's had presented a more reasonable plan for renovating the Grange Hall. Murphy was fearful that the Girl Scouts might find this task a larger one than anticipated. Murphy had also suggested that the Lions, Girl Scouts and Chelmsford Players be

allowed to schedule activities at the Grange.

Altogether, seven organizations had submitted applications for use of the Grange Hall. The three mentioned above appeared to have the greatest need for the building. At an earlier meeting to review applications, residents of Proctor Rd. were invited to express their opinions concerning use of the Grange. One of their concerns was that alcohol not be consumed on the property.

It was this last concern that Sel. Philip Currier addressed himself to when he disagreed with Murphy's suggestion that the Hall be operated by the Lions Club. Sel. Hart said he, too, was opposed to alcohol being served there. It was Selectman Lovering who made the motion to award use of the Hall to

Continued On Page 16

the Girl Scouts saying he "could think of no better neighbors for residents than the Girl Scouts."

A number of uniformed Girl Scout leaders, waiting to hear the outcome of the Board's discussion, broke out bright smiles of pleasure at Lovering's words, then held their breaths and crossed their

fingers hoping for a favorable reaction to Lovering's motion. They were the only applicants represented Monday night.

The Board supported Lovering's motion with the understanding that the Girl Scouts would allow other organizations to use the building. The following conditions were also agreed upon and will be forwarded to the Girl Scouts for approval.

1. Facility not to be made into a park or sold.
2. All costs associated with the building and grounds to be borne by the using groups.
3. Use to be restricted to the groups which have made application to date to the Selectmen. Any expansion to other groups must be approved beforehand by the Board.
4. "No Parking" regulations for Proctor Road to be established by the Board of Selectmen.
5. Parking and removal of debris from the property to be the first order of business for the users.
6. Interior modifications to be approved by the Board of Selectmen.
7. Due to the lateness in the year, exterior painting to be the first order of business in the spring.
8. Review of operation to be conducted with the Selectmen at the 3 month and 6 month marks.
9. The Girl Scouts to be the organization responsible to the Board for operation and financial matters.
10. Proctor Road residents to be allowed use of the building without charge one evening every three months.
11. Hours restricted to 9 a.m. to 10 a.m. To 12 p.m. on one Saturday

- per month.
12. Board of Selectmen to appoint one of their members to serve as a liaison with the users and with the Proctor Rd. residents.
13. No Liquor on premises.
14. Lease agreement between Girl Scouts and Selectman to be drawn on annual basis for financial consideration of \$1. per year.



THE OLD GRANGE HALL on Proctor Road will have as its principal tenant from now on, the Girl Scouts. The Selectmen made the decision Monday night, Nov. 15. A good deal of renovation work will be done (most of it waiting until Spring) and a number of restrictions were placed upon use of the property. Scout leaders at the meeting were very pleased with the decision. (Photo by Rob Macentee)



### New Program Services Committee Chairman

Mrs. Michael (Kathy) Byrne of Dracut is the newly appointed Program Services Committee Chairman. Congratulations Kathy and best wishes for a satisfying experience as chairman of this very important committee. Many thanks are due Ronnie Rawson, outgoing chairman, for her years of leadership of the committee. Ronnie now serving as Chairman of the Selections Committee.

### New Insignia Program for Brownie Scouts

Brownie Leaders - be sure to read the October, 1976 issue of Leader Magazine, pp. 10,11, "New Insignia Program for Brownie Girl Scouts". It tells what the new insignia program is all about. Sometime in January, materials for the new program will be available from Cedar Hill. The kits will include: (1) "Leader's Guide to Brownie B and Bridge to Junior Patches" - 75¢; (2) Sample patches - 3 Brownie B patches @ 20¢, 1 Bridge to Juniors patch @ 35¢, 1 Junior Aide patch @ 25¢; (3) Tips for Junior Leaders for Bridging activities for Juniors and Brownies, and the Junior Aide patch (free); Total cost (we think) will be \$1.95 per kit. (These last free materials will also be available from the council office for all Junior troops. They were ordered early in November but have not arrived yet).

There will be training in the use of the new program at the College of Girl Scouting on January 18-19. See your brochure and sign up. If materials are ready then, we will have them for sale at the country store at the college.

### Dream Come True - Chelmsford Scout House

An old Grange Hall in South Chelmsford was vacant and the town offered it to any non-profit organization that could use and maintain it. Tahattawan Leaders met and unanimously voted to support this acquisition. This is not a council facility. The "Chelmsford Scout House" will be run by a committee of Chelmsford Girl Scout Leaders.

The building has a large hall that holds one hundred people and has a stage, two kitchens, two bathrooms and a meeting room. There is an acre of land with the building.

Cleanup and painting on the inside has started with the outside painting to wait until Spring.

Four troops plan to meet there on a regular basis and all neighborhood events will be held there also. The leaders and scouts of the Tahattawan neighborhood planned an open house for December 11. The public was invited to see the Scout House and attend the Christmas Fair.



Other Scout groups are welcome to use the facility for \$5 a day. Non-Scouting organizations will be charged \$25 a day.

If you're interested, reservations are arranged by Janice Brown, 256-8000.

**Wider Opportunities** Girls applying for events not needing interviews and who are not applying for financial assistance have until January 5th to get their applications into our Council Office.

### MERRIMACK RIVER GIRL SCOUT COUNCIL

89 North Main Street, Andover, MA 01810  
617/475-4511, Vol.V, No.12, January 1977  
Bulletin Editor - Barbara Eldering

Non-Profit  
Organization  
U.S. POSTAGE  
PAID

# Chelmsford Independent

Feb. 14, 1981

## Scout House to close

By SUE CARMAN

In an emotion laden confrontation held Thursday evening, a majority of the membership of Chelmsford Scout House Inc. voted to dissolve the corporation confirming the vote of the Board of Directors taken on January 22, 1981.

Fifty two members, who are required by the corporation's bylaws to be registered Girl Scouts, voted for the dissolution; thirty six voted to continue the corporation and one abstained. Fifty seven of the votes were by proxy.

Subsequent votes were unanimous absolving the Board of Directors of any wrongdoing and accepting, ratifying and confirming all things the Board has done since 1979. A motion to remove the current Board was defeated.

The conflict, which was called an "internal corporate battle" by Attorney Annmarie Roark, crystallized when a majority of the Board of Directors of Chelmsford Scout House Inc. voted to dissolve the corporation. This in effect began the closing of the Scout House because the primary role of the corporation was to operate and maintain the facility.

It was the belief of George and Janice Brown and Carole Curtin, who sought legal action to force a calling of a general meeting, that all registered Girl Scouts over the age of 18, who comprise the general membership of Chelmsford Scout House Inc. should have a say in the decision. Attorneys for both sides agree that the votes of the membership, which include proxies solicited by both sides, will play a crucial role in a number of decision making issues.

During a January 22nd meeting, a majority of the Board of Directors of the non-profit corporation voted to dissolve the corporation whose purpose is to operate and maintain the Scout House leased for \$1 per year from the town. Janice Brown, who cast the one dissenting vote, stated at an informational meeting held Wednesday evening, that difficulties in meeting the expenses to maintain the Proctor Road property were cited as the reason for the closure. Alternatives to increase funds were not discussed, she stated.

Annmarie Roark, the attorney representing twelve members of the Board of Directors, stated in a telephone interview, that "the Board of Directors had a

fiduciary duty to see that the corporation remained solvent." The funds in the treasury, she added, "are not such a vast amount to be able to withstand a long, cold winter."

Advocate Carole Curtin stated at a Wednesday night informational meeting that \$2000 was collected last year from the Halloween spook house, the Christmas Fair, camp physicals and a \$500 Tupperware party.

A "financial picture" compiled by the Board of Directors could not be made available to the press prior to its disclosure at the Thursday evening meeting.

George Brown, one of the advocates of keeping the Scout House open as a "community service", does not believe this. He asserts that, according to his figures, the \$1100 in the treasury with outstanding bills of \$400-\$500 ample to meet the needs of the corporation. The oil tanks are almost full, he noted, feeling that another oil payment won't be necessary until the fall.

Attorney Roark also wondered "where the cooperation was" when the Directors were trying to run the Scout House. "They (the Directors) called meetings," she stated, "and didn't get quorums." The Directors also question whether the facility is "effectively utilized", she added.

Carole Curtin, who is also in support of keeping the Scout House open, agreed Wednesday evening that being on the Board "is not an easy job". Curtin, who added that the Board members have done a "marvelous thing" and are "just tired", stated "a lot of us are willing to work."

According to George Brown, after the decision was made to dissolve the corporation, he sent a letter to Board President Shirley Lindsey requesting a special meeting of the general membership, signed by three members as required by the corporate bylaws. Brown stated that his request was refused by Lindsey who he alleges told him the corporation was already dissolved.

In an effort to keep the Scout House open, George Brown, Janice Brown, and Carole Curtin, who are all active in Girl Scouts, retained Attorney John Leslie. Because letters had already been sent to the Board of Selectmen and the Secretary of State announcing the intent to dissolve the corporation, Leslie obtained a



**UNCERTAIN FUTURE** A recent decision to close the Scout House on Proctor Road has been legally delayed by a February 6th preliminary injunction filed by three members of the Chelmsford Scout House Inc. corporation. (Photo by Micki Hilliard)

temporary restraining order from Middlesex Superior Court on January 30, 1981, to delay the dissolution. The order, which was granted, prevents any transfer of assets or expenditure of monies in the treasury.

The restraining order alleges that on or about January 28, 1980, the twelve defendants (who are members of the Board of Directors) attempted to "initiate the dissolution of Chelmsford Scout House Inc. without having taken a vote of the Membership as required by Massachusetts General Law."

The complaint also alleges that the defendants, who have been "acting as members of the Board of Directors", did not hold an annual meeting of the membership in November, 1980, as specified in the bylaws. Five affidavits were filed from corporation members which stated that they were not notified in a correct manner of the meeting. Election of officers, the bylaws state, are to be conducted at the annual meeting.

Attorney Roark, who is representing the defendants, states that the corporation is considered a "charitable non-profit" organization which, by state statute, only requires a vote of the Board of Directors to dissolve. It is Attorney Leslie's contention that the corporation is classified simply "non-profit" which is governed by another state statute which requires a vote of the membership to dissolve.

On February 6, 1981, a court hearing was held and granted a preliminary injunction which will be in effect until the trial, whose date has not been set.

A letter dated February 2, 1981, was sent by the Board of Directors to the general membership announcing a special meeting for February 12, 1981. Agenda items that were scheduled for a vote were: "to reverse the action of the Board of Directors in the closing of the Scout House", "to remove from office the current officers and certain Board members", and "to elect, by the General Membership, new officers and Board of Directors".

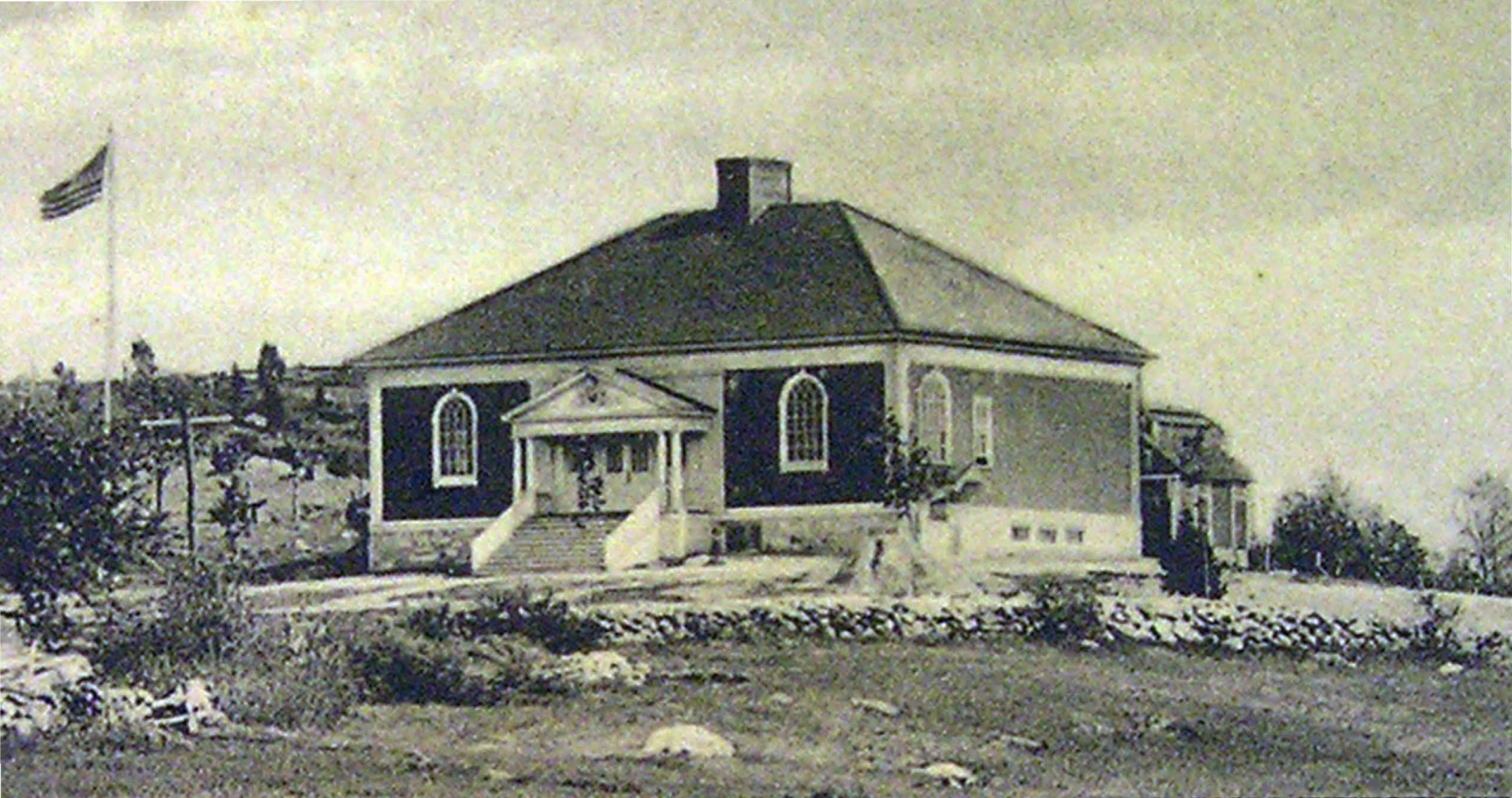
The current Board has proposed to discuss the corporation's current financial status with a review of maintenance expenses and current use of the Scout House. Currently, the building is the regular meeting place for only one of the 53 Girl Scout troops. The Scout House advocates contend, however, that the building is necessary for many special events such as fund raisers, adult leadership training and camp physicals.

Marion Gould, who is the Master of the South Chelmsford Grange and advisor to a Boy Scout Explorer Troop using the facility regularly, has written a letter, supporting the movement to keep the Scout House open. It is also used regularly by two food coops and for a number of other organization's special events.

"It's turned into a war," Janice Brown stated.

"They (the Board of Directors) do not want to see the Girl Scouts destroyed by it," Attorney Roark concluded.





THE SCHOOL HOUSE,  
SOUTH CHELMSFORD, MASS.



**THE OLD GRANGE HALL** on Proctor Road will have as its principal tenant from now on, the Girl Scouts. The Selectmen made the decision Monday night, Nov. 15. A good deal of renovation work will be done (most of it waiting until Spring) and a number of restrictions were placed upon use of the property. Scout leaders at the meeting were very pleased with the decision. (Photo by Rob Macentee)

